



AIR CONDITIONING



REFRIGERATION



HEATING

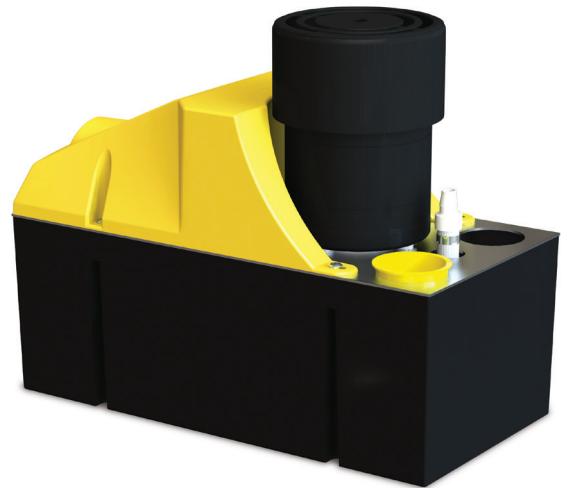


EN

heavy duty 6m & 10m

CONDENSATE REMOVAL PUMP

With an impressive flow rate, these robust and reliable Heavy Duty pumps are perfect for the rapid removal of large quantities of condensate water.



6m: 900L/h max. flow
10m: 1250L/h max. flow



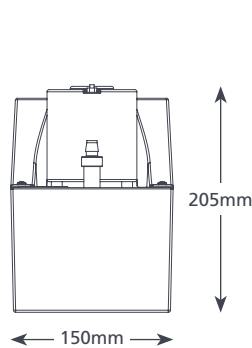
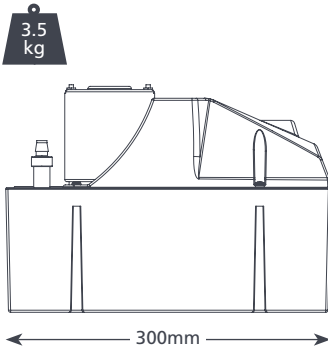
6m: 6m max. rec. head
(flow rate 350L/h)
10m: 10m max. rec. head
(flow rate 300L/h)

KEY FEATURES

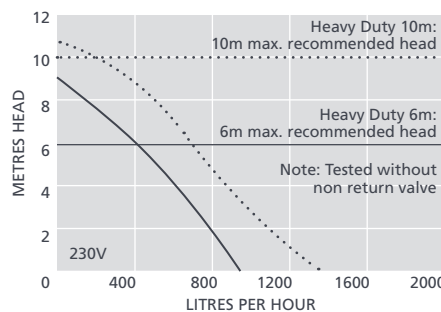
- High flow rate
- Non return valve
- Easy installation
- 4 litre tank capacity

SUITABILITY

- 6m: Up to 1200kW / 4m Btu/h
10m: Up to 1660kW / 5.5m Btu/h
- Refrigeration cabinets; Humidifiers;
Air handling units (AHUs)



HEAVY DUTY 6M & 10M SPECIFICATIONS	
Max. flow	HD6: 900L/h, HD10: 1250L/h
Max. rec. head	HD6: 6m L/h, HD10: 10m L/h
Tank capacity	4L
Sound level@1m	HD6: 60dB(A), HD10: 64dB(A)
Power supply	HD6: 230V AC 50-60Hz 1.5A HD10: 230V AC 50-60Hz 0.38A
Rated	HD6: Non continuous HD10: continuous
Class	I appliance
Max. unit output	HD6: 1200kW / 4m Btu/h HD10: 1660kW / 5.5m Btu/h
Max. water temp	40°C / 104°F
Inlet/outlet	x2 40mm in, 10mm out
IP Protection	1PX0
Safety switch	4.0A Normally closed



SUGGESTED XTRA ACCESSORIES

Description	Part No.
Tank pump connector 16mm-21mm	FP2011
Tube To Soil Stack Adaptor	FP2038
Vinyl Tube Braided 1/4" (6mm)	AX5110
StayClean Tablets	FP2418

Xtra For more installation accessories take a look at our Aspen Xtra range

HEAVY DUTY 6M & 10M OPTIONS	
Heavy Duty 6m	FP2074/2
Heavy Duty 10m	FP2066/2

IN THE BOX
Heavy Duty 6m or 10m pump • 2m power cable • Install manual

Download manual at aspenpumps.com