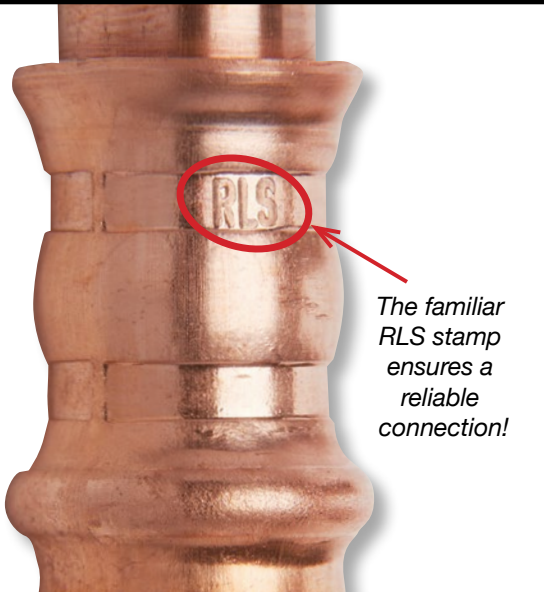


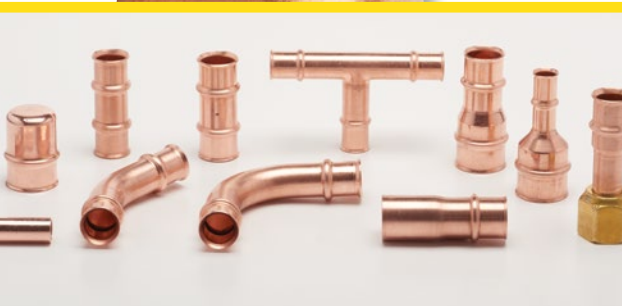


The Original Flame-Free
Refrigerant Press Fittings

Product Catalogue



*The familiar
RLS stamp
ensures a
reliable
connection!*



**MADE
IN USA** 

Table of Contents



Introduction	3-5
Couplings and Slip Couplings	6
90° Elbows and 90° Street Elbows	7
45° Elbows and Tees	8
Reducers and Reducing Bushings	9
SAE/Euro Flares and Caps	10
Ancillary Products	11-12
Tools, Jaws and Accessories	13-15
Technical Data	16

15-Year Limited Warranty

All RLS press fittings are backed by a 15-year limited warranty when installed in accordance with RLS installation instructions using RLS-approved tools and jaws.

See information on rapidlockingsystem.com.au for complete details.



RLS press fittings were specifically designed and engineered to join copper tube in high-pressure HVAC and refrigeration systems. Our patented RLS press fittings are fully registered and listed to UL207 for pressures up to 700 PSI.

These first-of-their-kind fittings connect quickly and easily using an RLS-approved press tool and jaws, replacing the time-consuming practice of manually brazing joints. The pressing procedure is similar to the one used with water press fittings. RLS press fittings, however, were developed to withstand the high pressures found in HVAC/R systems.

SAFE, FAST AND RELIABLE: THE IDEAL INSTALLATION AND REPAIR SOLUTION

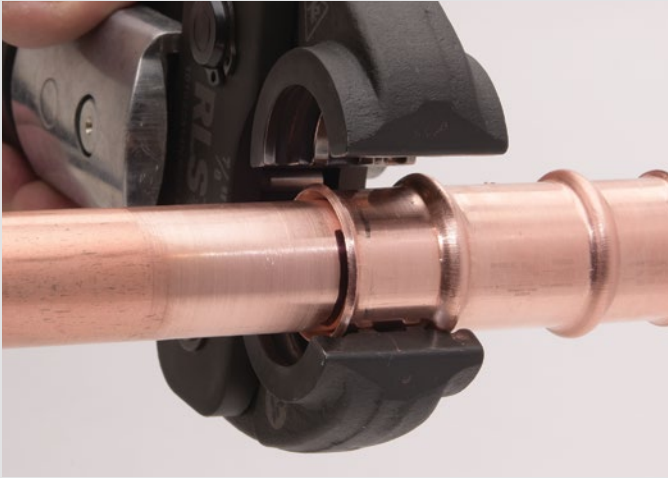
SAFE: Elimination of the brazing process by using a flame-free press tool results in a safer work environment without the added risk of fire hazards.

FAST: Connections completed in 10 seconds.

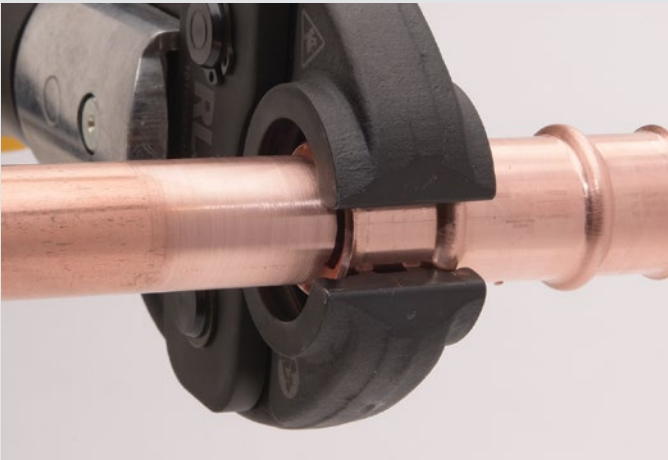
RELIABLE: More consistent and dependable connections requiring less rework than the traditional brazing method. Plus, RLS press fittings are backed by a 15-year limited warranty.

Overall, projects will result in higher-quality work that can be completed successfully by fewer people in significantly less time, resulting in increased profit per job and the ability to get more jobs done.

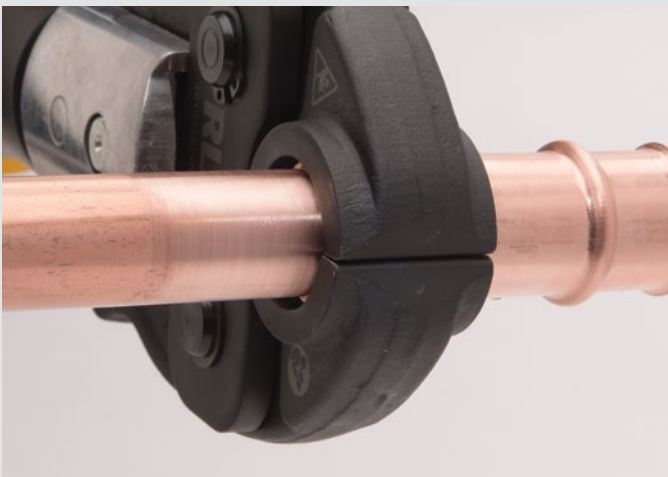
Introduction



1. Insert the tube in the fitting



2. Align the jaws



3. Activate the battery-powered tool

As easy as 1-2-3!

RLS press fittings offer a simple, effective and economical method to create reliable copper tube connections. The RLS pressing process is very straightforward, and can be completed with minimal training. Copper tube ends are first prepped the same way as with brazing. Then, in just 10 seconds, the press tool creates a permanent and reliable mechanical joint without the dangers of heat or flammable gas.

THE RLS ADVANTAGE

- *Connects in 10 seconds*
- *UL listed to 700 psi*
- *360° metal-to-metal connections*
- *Huge labor and time savings*
- *Less equipment required*
- *Safer conditions, no fire hazards*
- *No need to nitrogen purge*
- *More flexible access to job sites*
- *15-year limited warranty**

*See rapidlockingsystem.com.au for complete details.



All RLS products are suitable for use with the following refrigerants:

R-32	R-134A	R-404A	R-407A	R-407C	R-407F
R-407H	R-410A	R-417A	R-421A	R-422B	R-422D
R-424A	R-427A	R-434A	R-437A	R-438A	R-448A
R-449A	R-450A	R-452A	R-453A	R-456A	R-507A
R-513A	R-513B	R-718	Ethylene Glycol	R-22*	

**Special order item, includes neoprene o-rings in place of HNBR.*

Contact us about special blends or other refrigerants not listed here.

Check your local codes to ensure that RLS press fittings are suitable for use with your particular refrigerant.

RLS fittings are also compatible with the following industrial (non-refrigerant) gases: nitrogen, argon, helium and oxygen (non-medical).

FLAME-FREE FITTINGS FOR INCREASED SAFETY.

Contractors using RLS press fittings will benefit from offering flame-free service with no fire hazards. That results in a safer work environment. Additional advantages include:

- Less risk and reduced liability
- No need to nitrogen purge
- No dragging heavy equipment to the job site

Add up all of the benefits – safer conditions, no fire hazards, and increased efficiencies – and RLS press fittings can offer huge cost and time savings, with far fewer headaches.

RLS XL IS HERE!

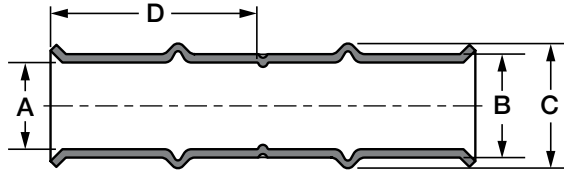


1-5/8" and 2-1/8" couplings, elbows, tees and reducers.

COUPLINGS

Couplings

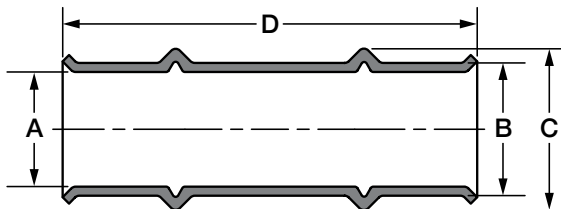
DIMENSIONS



Size (Inch)	Part Number	Dimensions (mm)				Box Quantity	Carton Quantity	Carton Weight
		A	B	C	D			
1/4	3011040400111	6.6	8.6	11.4	24.1	10	100	1.0 kg
5/16	3011050500111	8.2	10.2	13.2	23.6	10	100	1.3 kg
3/8	3011060600111	9.8	11.8	15.0	24.9	10	100	1.6 kg
1/2	3011080800111	13.0	15.0	18.5	31.8	10	100	2.8 kg
5/8	3011101000111	16.1	18.7	22.6	31.5	10	100	4.3 kg
3/4	3011121200111	19.3	22.4	27.2	32.8	10	40	2.5 kg
7/8	3011141400111	22.5	25.8	30.2	33.3	10	40	3.2 kg
1	3011161600111	25.7	29.5	34.5	33.3	10	40	4.3 kg
1-1/8	3011181800111	28.8	32.6	36.8	32.8	10	40	4.8 kg
1-1/4	3011202000111	32.1	35.9	41.1	33.0	12	24	3.4 kg
1-3/8	3011222200111	35.2	39.0	44.5	39.9	12	24	4.1 kg
1-5/8	3011262600111	41.7	47.8	55.4	47.0	4	4	1.5 kg
2-1/8	3011343400111	54.3	60.5	68.1	59.4	4	4	2.5 kg

Slip Couplings

DIMENSIONS



Size (Inch)	Part Number	Dimensions (mm)				Box Quantity	Carton Quantity	Carton Weight
		A	B	C	D			
1/4	3021040400111	6.6	8.6	11.4	50.8	10	100	1.0 kg
5/16	3021050500111	8.2	10.2	13.2	51.1	10	100	1.3 kg
3/8	3021060600111	9.8	11.8	15.0	52.1	10	100	1.6 kg
1/2	3021080800111	13.0	15.0	18.5	69.6	10	100	2.8 kg
5/8	3021101000111	16.1	18.7	22.6	69.9	10	100	4.3 kg
3/4	3021121200111	19.3	22.4	27.2	69.9	10	40	2.5 kg
7/8	3021141400111	22.5	25.8	30.2	69.6	10	40	3.2 kg
1-1/8	3021181800111	28.8	32.6	36.8	70.4	10	40	4.8 kg
1-3/8	3021222200111	35.2	39.0	44.5	80.0	12	24	4.1 kg

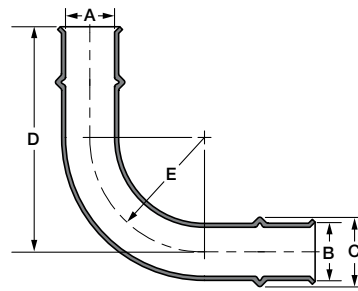
ELBOWS



90° Elbows



DIMENSIONS

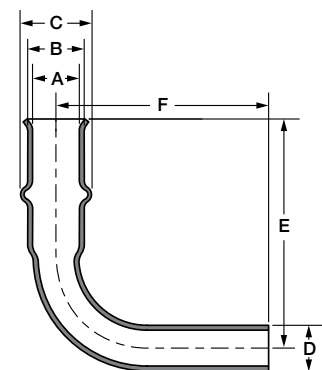


Size (Inch)	Part Number	Dimensions (mm)					Box Quantity	Carton Quantity	Carton Weight
		A	B	C	D	E			
1/4	3031040400111	6.6	8.6	11.5	51.1	17.3	10	100	2.0 kg
5/16	3031050500111	8.2	10.2	13.1	54.1	20.6	10	100	2.6 kg
3/8	3031060600111	9.8	11.8	14.9	57.7	23.6	10	100	3.4 kg
1/2	3031080800111	13.0	15.0	18.6	73.2	30.0	10	100	5.3 kg
5/8	3031101000111	16.1	18.7	22.5	81.5	37.3	10	100	9.1 kg
3/4	3031121200111	19.3	22.4	27.2	88.1	44.7	10	40	5.6 kg
7/8	3031141400111	22.5	25.8	30.2	95.3	51.6	10	40	7.5 kg
1	3031161600111	25.7	29.5	34.6	102.6	59.2	10	40	10.1 kg
1-1/8	3031181800111	28.8	32.6	36.7	109.0	64.5	10	40	12.6 kg
1-1/4	3031202000111	32.1	35.9	41.0	109.2	64.3	5	5	1.7 kg
1-3/8	3031222200111	35.2	39.0	44.4	115.3	69.9	5	5	2.2 kg
1-5/8	3031262600111	41.7	47.8	55.4	139.4	82.6	2	2	2.1 kg
2-1/8	3031343400111	54.3	60.5	68.1	173.5	108.0	2	2	3.3 kg

90° Street Elbows



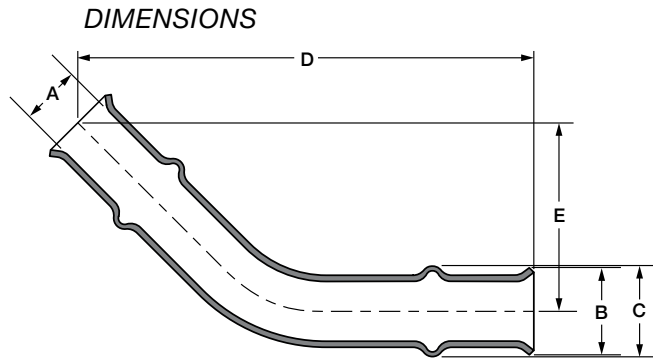
DIMENSIONS



Size (Inch)	Part Number	Dimensions (mm)						Box Quantity	Carton Quantity	Carton Weight
		A	B	C	D	E	F			
3/8	3501060600111	9.8	11.8	14.9	9.5	44.5	48.0	10	100	2.2 kg
1/2	3501080800111	13.0	15.0	18.6	12.7	65.0	67.3	10	100	4.2 kg
5/8	3501101000111	16.1	18.7	22.5	15.9	67.1	71.4	10	100	6.9 kg
3/4	3501121200111	19.3	22.4	27.2	19.1	76.2	80.0	10	40	4.2 kg
7/8	3501141400111	22.5	25.8	30.2	22.2	82.6	86.4	10	40	5.8 kg
1-1/8	3501181800111	28.8	32.6	36.7	28.6	96.5	99.8	10	40	10.0 kg
1-3/8	3501222200111	35.2	39.0	44.4	34.9	111.3	114.6	5	5	1.7 kg

ELBOWS/TEES

45° Elbows

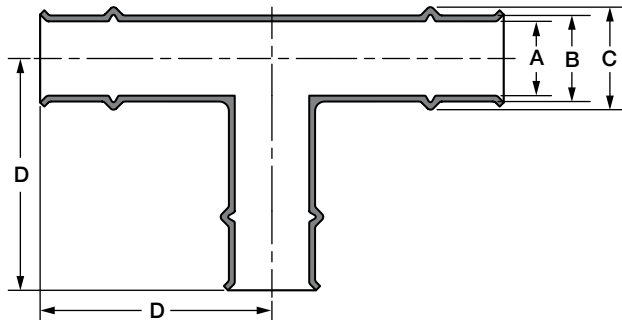


Size (Inch)	Part Number	Dimensions (mm)					Box Quantity	Carton Quantity	Carton Weight
		A	B	C	D	E			
3/8	3081060600111	9.8	14.2	14.9	74.7	30.7	10	100	2.6 kg
1/2	3081080800111	13.0	18.0	18.6	94.5	39.1	10	100	4.4 kg
5/8	3081101000111	16.1	21.8	22.5	100.8	41.7	10	100	7.2 kg
3/4	3081121200111	19.3	25.9	27.0	104.6	43.2	10	40	4.3 kg
7/8	3081141400111	22.5	28.7	30.2	114.0	47.2	10	40	5.8 kg
1-1/8	3081181800111	28.8	35.8	36.7	122.9	50.8	10	40	9.2 kg
1-3/8	3081222200111	35.2	42.7	44.4	129.8	53.6	5	5	1.7 kg
1-5/8	3081262600111	41.7	50.8	55.4	158.0	65.5	2	2	1.4 kg
2-1/8	3081343400111	54.3	65.3	68.1	189.0	78.2	2	2	2.1 kg

Tees



DIMENSIONS

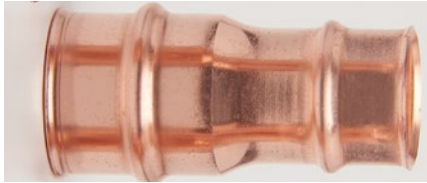


Size (Inch)	Part Number	Dimensions (mm)				Box Quantity	Carton Quantity	Carton Weight
		A	B	C	D			
3/8	3091060606111	9.8	11.8	14.9	41.4	10	100	3.8 kg
1/2	3091080808111	13.0	15.0	18.2	56.6	10	100	6.8 kg
5/8	3091101010111	16.1	18.7	22.0	58.4	10	100	12.2 kg
3/4	3091121212111	19.3	22.4	26.6	60.5	10	40	6.8 kg
7/8	3091141414111	22.5	25.8	30.2	61.7	10	40	8.2 kg
1	3091161616111	25.7	29.5	34.6	65.8	10	40	10.8 kg
1-1/8	3091181818111	28.8	32.6	36.7	65.0	10	40	13.8 kg
1-1/4	3091202020111	32.1	35.9	41.0	85.3	5	5	2.1 kg
1-3/8	3091222222111	35.2	39.0	44.4	85.3	5	5	2.4 kg
1-5/8	3091262626111	41.7	47.8	55.4	100.3	2	2	2.1 kg
2-1/8	3091343434111	54.3	60.5	68.1	106.2	2	2	2.9 kg

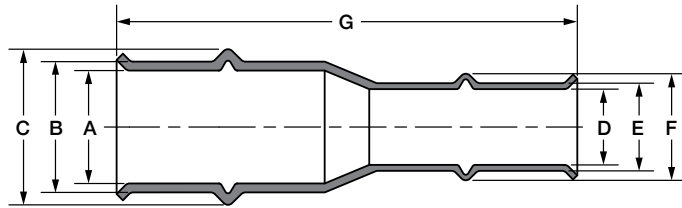
REDUCERS/REDUCING BUSHINGS



Reducers



DIMENSIONS

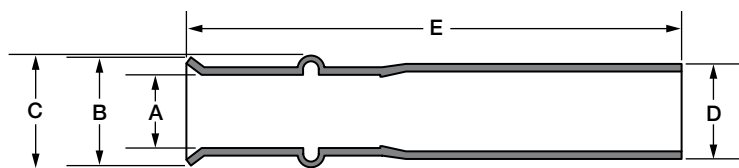


Size (Inch)	Part Number	Dimensions (mm)							Box Quantity	Carton Quantity	Carton Weight
		A	B	C	D	E	F	G			
3/8 to 1/4	3051060400111	9.8	11.8	14.9	6.6	8.6	11.5	56.9	10	100	1.7 kg
1/2 to 1/4	3051080400111	13.0	15.0	18.6	6.6	8.6	11.5	68.8	10	100	2.3 kg
1/2 to 3/8	3051080600111	13.0	15.0	18.6	9.8	11.8	14.8	65.5	10	100	2.5 kg
5/8 to 1/4	3051100400111	16.1	18.7	22.5	6.6	8.6	11.5	68.6	10	100	3.6 kg
5/8 to 3/8	3051100600111	16.1	18.7	22.5	9.8	11.8	14.8	68.6	10	100	3.7 kg
5/8 to 1/2	3051100800111	16.1	18.7	22.1	13.0	15.0	18.2	78.7	10	100	4.0 kg
3/4 to 1/2	3051120800111	19.3	22.4	26.7	13.0	15.0	18.2	78.7	10	40	2.1 kg
3/4 to 5/8	3051121000111	19.3	22.4	26.7	16.1	18.7	22.1	76.2	10	40	2.4 kg
7/8 to 1/2	3051140800111	22.5	25.8	30.2	13.0	15.0	18.2	77.5	10	40	2.5 kg
7/8 to 5/8	3051141000111	22.5	25.8	30.2	16.1	18.7	22.1	77.5	10	40	3.0 kg
7/8 to 3/4	3051141200111	22.5	25.8	30.2	19.3	22.4	26.7	79.0	10	40	3.3 kg
1 to 7/8	3051161400111	25.7	29.5	34.7	22.5	25.8	30.2	78.5	10	40	4.1 kg
1-1/8 to 1/2	3051180800111	28.8	32.6	36.7	13.0	15.0	18.2	82.6	10	40	3.7 kg
1-1/8 to 5/8	3051181000111	28.8	32.6	36.7	16.1	18.7	22.1	82.6	10	40	4.1 kg
1-1/8 to 3/4	3051181200111	28.8	32.6	36.7	19.3	22.4	26.7	80.8	10	40	4.4 kg
1-1/8 to 7/8	3051181400111	28.8	32.6	36.7	22.5	25.8	30.2	78.7	10	40	4.5 kg
1-3/8 to 7/8	3051221400111	35.2	39.0	44.4	22.5	25.8	30.2	93.0	12	24	1.3 kg
1-3/8 to 1-1/8	3051221800111	35.2	39.0	44.4	28.8	32.6	36.7	84.8	12	24	1.5 kg
1-5/8 to 1-1/8	3051261800111	41.7	47.8	55.4	29.0	32.7	36.8	114.3	4	4	1.3 kg
1-5/8 to 1-3/8	3051262200111	41.7	47.8	55.4	35.3	39.1	44.5	109.2	4	4	1.4 kg
2-1/8 to 1-3/8	3051342200111	54.3	60.5	68.1	35.3	39.1	44.5	132.1	4	4	1.9 kg
2-1/8 to 1-5/8	3051342600111	54.3	60.5	68.1	41.7	47.8	55.4	128.3	4	4	2.4 kg

Reducing Bushings



DIMENSIONS



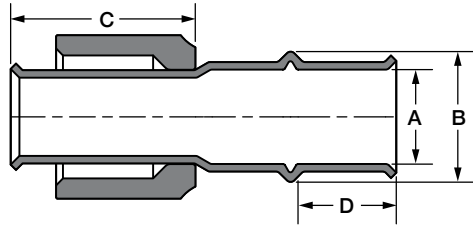
Size (Inch)	Part Number	Dimensions (mm)					Box Quantity	Carton Quantity	Carton Weight
		A	B	C	D	E			
1/2 to 3/8	3521080600111	9.8	14.2	14.9	12.7	63.5	10	100	2.1 kg
5/8 to 1/2	3521100800111	13.0	17.3	18.2	15.9	74.9	10	100	3.3 kg
3/4 to 5/8	3521121000111	16.1	21.3	22.0	19.1	75.7	10	40	2.0 kg
7/8 to 3/4	3521141200111	19.3	25.9	26.6	22.2	77.2	10	40	2.7 kg
1-1/8 to 7/8	3521181400111	22.5	27.9	30.2	28.6	77.7	10	40	3.9 kg
1-3/8 to 1-1/8	3521221800111	28.8	35.6	36.7	34.9	79.2	12	24	3.2 kg

FLARES/CAPS

SAE/Euro Flares



DIMENSIONS



Per ARI Guideline M-97 45° Refrigeration Flare Fittings and Copper Tubing

Size	Torque, ft-lbs [N*m]	
	Minimum	Maximum
1/4"	8 [11]	10 [14]
3/8"	15 [20]	25 [34]
1/2"	25 [34]	35 [47]
5/8"	40 [54]	55 [75]
3/4"	50 [68]	60 [81]

Note: Per Section 9.5 of the M-97 Guideline, when applying torque to the flare connection the use of lubricants/lubrication is not recommended.

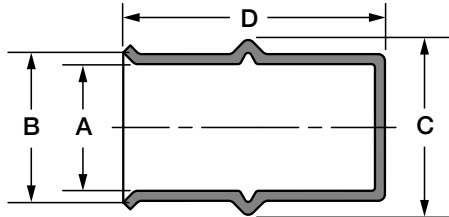
Note: Applying a torque above the maximum limit may distort or damage the sealing surface of the flare.

Size (Inch)	Part Number	Dimensions (mm)				Box Quantity	Carton Quantity	Carton Weight
		A	B	C	D			
1/4	3291040000111	6.6	11.5	35.1	14.2	10	100	2.7 kg
3/8	3291060000111	9.8	14.9	35.1	14.7	10	100	4.3 kg
1/2	3291080000111	13.0	18.2	34.8	19.1	10	100	6.5 kg
5/8	3291100000111	16.1	22.0	37.6	19.1	10	40	3.8 kg
3/4	3291120000111	19.3	26.6	37.6	20.3	10	40	6.7 kg

Caps



DIMENSIONS



Size (Inch)	Part Number	Dimensions (mm)				Box Quantity	Carton Quantity	Carton Weight
		A	B	C	D			
1/4	3071040000111	6.6	8.6	11.5	36.8	10	100	0.8 kg
5/16	3071050000111	8.2	10.2	13.1	36.8	10	100	1.0 kg
3/8	3071060000111	9.8	11.8	14.9	36.8	10	100	1.2 kg
1/2	3071080000111	13.0	15.0	18.2	50.0	10	100	2.3 kg
5/8	3071100000111	16.1	18.7	22.0	50.3	10	100	3.1 kg
3/4	3071120000111	19.3	22.4	26.6	50.0	10	40	1.7 kg
7/8	3071140000111	22.5	25.8	30.2	48.3	10	40	2.2 kg
1	3071160000111	25.7	29.5	34.6	50.8	10	40	3.3 kg
1-1/8	3071180000111	28.8	32.6	36.7	50.5	10	40	3.5 kg
1-1/4	3071200000111	32.1	35.9	41.0	63.5	12	24	3.0 kg
1-3/8	3071220000111	35.2	39.0	44.4	63.2	12	24	3.3 kg

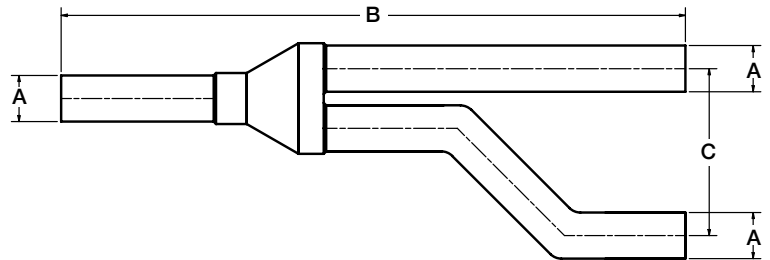
ANCILLARY PRODUCTS

ODM products are compatible with RLS fittings.



ODM Y-Joints

DIMENSIONS

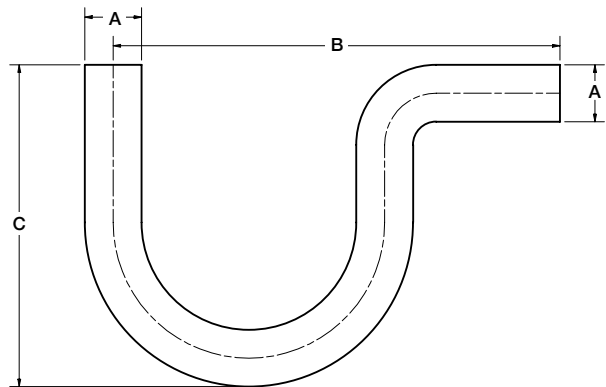


Size (Inch)	Part Number	Dimensions (mm)			Box Quantity	Carton Quantity
		A	B	C		
3/8	3771060606130	9.7	192.0	60.0	2	44
1/2	3771080808130	12.7	227.1	63.0	2	44
5/8	3771101010130	16.0	240.0	66.0	2	42
3/4	3771121212130	19.1	258.1	69.1	2	24
7/8	3771141414130	22.4	307.1	72.9	2	24
1-1/8	3771181818130	28.7	333.0	89.9	1	10
1-3/8	3771222222130	35.1	379.0	103.1	1	10



ODM P-Traps

DIMENSIONS



Size (Inch)	Part Number	Dimensions (mm)			Box Quantity	Carton Quantity
		A	B	C		
1/2	3761080800111	12.7	130.0	89.9	2	80
5/8	3761101000111	16.0	130.0	91.9	2	80
3/4	3761121200111	19.1	150.1	108.0	2	38
7/8	3761141400111	22.4	169.9	118.1	2	38
1-1/8	3761181800111	28.7	210.1	151.9	2	10
1-3/8	3761222200111	35.1	260.1	190.0	2	10



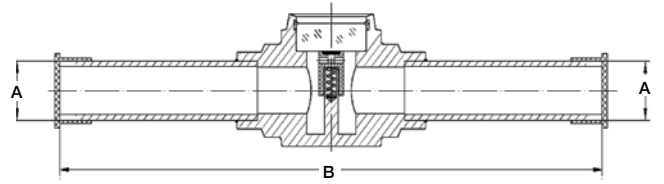
ANCILLARY PRODUCTS

ODM products are compatible with RLS fittings.

ODM Sight Glasses



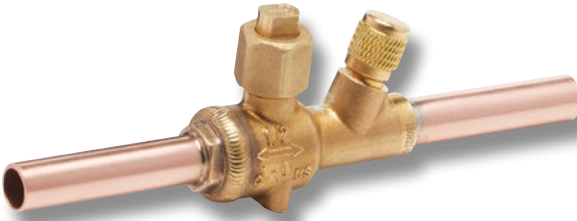
DIMENSIONS



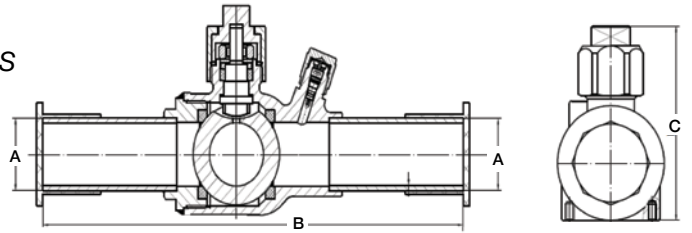
Size (Inch)	Part Number	Dimensions (mm)		Box Quantity	Carton Quantity
		A	B		
1/4	3781040400111	6.4	102.1	1	100
3/8	3781060600111	9.4	119.1	1	100
1/2	3781080800111	12.7	154.9	1	100
5/8	3781101000111	16.0	156.0	1	50
3/4	3781121200111	19.1	161.0	1	50
7/8	3781141400111	22.4	166.9	1	50
1-1/8	3781181800111	28.7	192.0	1	30

ODM Ball Valves

(Bi-Directional with Schrader valves)



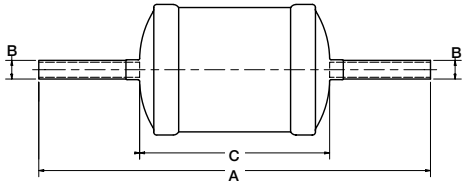
DIMENSIONS



Size (Inch)	Part Number	Dimensions (mm)			Box Quantity	Carton Quantity
		A	B	C		
1/4	3791040400111	6.4	171.5	51.3	1	40
3/8	3791060600111	9.4	161.0	51.3	1	40
1/2	3791080800111	12.7	166.6	51.3	1	40
5/8	3791101000111	16.0	172.0	58.4	1	40
3/4	3791121200111	19.1	178.0	66.0	1	30
7/8	3791141400111	22.4	184.0	66.0	1	30
1-1/8	3791181800111	28.7	207.3	83.1	1	30
1-3/8	3791222200111	34.8	228.6	98.6	1	24

ODM Filter Driers

DIMENSIONS



Size (Inch)	Part Number	Desiccant (Cubic Inches)	Dimensions (mm)			Box Quantity	Carton Quantity
			A	B	C		
3/8 Liquid Line	3821060600111	8	201.9	9.7	99.1	1	30
3/8 Liquid Line	3831060600111	16	225.0	9.7	121.9	1	30
1/2 Liquid Line	3831080800111	16	227.1	12.7	121.9	1	30
3/8 Liquid Line Bi-Directional	3921060600111	8	199.9	9.7	97.0	1	30
3/8 Liquid Line Bi-Directional	3931060600111	16	220.0	9.7	117.1	1	30

Part Number	Connections Inlet/Outlet	Flow Capacity Ton @ 1psi ΔP (For kw Multiply Ton By 3.5)				Water Capacity Drops of Water									
		R134a	R22 & R410A	R407C	R404A & R507	R134a		R22		R407c		R410A		R404A & R507	
						75°F	125°F	75°F	125°F	75°F	125°F	75°F	125°F	75°F	125°F
3821060600111	3/8" ODM	5.42	6.0	6.0	4.0	265	245	250	225	205	165	170	130	275	260
3831060600111	3/8" ODM	6.2	6.8	6.8	4.57	396	366	271	336	306	246	256	196	406	286
3831080800111	1/2" ODM	8.5	9.4	9.4	6.2	396	366	271	336	306	246	256	196	406	286
3921060600111	3/8" ODM	4.8	5.1	5.0	3.33	265	245	250	225	205	165	170	130	275	260
3931060600111	3/8" ODM	4.9	5.2	5.2	3.49	359	341	360	307	361	333	327	302	392	365

All ratings are in accordance with ANSI/AHRI standard 710-2009.



Klauke® 32 kN and 19 kN Press Tools

Benefits:

- Durable, high-quality construction that is built to last
- Short pressing cycle – 10 seconds or less – increases productivity
- Compact design and 350° jaw rotation allows technician to install in tight spaces
- Automatic piston return
- Safety feature that lets the press cycle be interrupted, allowing for manual release of the piston, if needed
- Tool service indicated via imbedded LEDs, illuminates at 10,000 cycles



**NOW AVAILABLE:
Klauke 32 kN tool and jaws!**



19 kN press tool

32 kN Tool Features:

- Pressing Force: 32 kN
- Presses/charge: 350-400 (4.0 Ah)
- Operating Temp. Range: -10°C to 40°C
- Weight with Battery:
Without Jaw: 3.6 kg
Including Jaw: 5.7 kg
- Dimensions: 359 x 76 x 317 mm

19 kN Tool Features:

- Pressing Force: 19 kN
- Presses/charge: 100-150 (2.0 Ah)
- Operating Temp. Range: -10°C to 40°C
- Weight with Battery:
Without Jaw: 1.8 kg
Including Jaw: 3.1 kg
- Dimensions: 395 x 80 x 118 mm

Batteries and battery chargers may be locally supplied by RLS stockist. Please check when purchasing. If not supplied by RLS stockist, please contact your nearest Makita stockist.

Klauke® Jaws

Klauke 32 kN Jaws

Size	Part Number
1/4"	399021321040
5/16"	399021321050
3/8"	399021321060
1/2"	399021321080
5/8"	399021321100
3/4"	399021321120
7/8"	399021321140
1"	399021321160
1-1/8"	399021321180
1-1/4"	399021321200
1-3/8"	399021321220
1-5/8"	399021321260
2-1/8"	399021321340
8-Jaw Kit	399031320801

Klauke 19 kN Jaws

Size	Part Number
1/4"	399021191040
5/16"	399021191050
3/8"	399021191060
1/2"	399021191080
5/8"	399021191100
3/4"	399021191120
7/8"	399021191140
1"	399021191160
1-1/8"	399021191180
1-1/4"	399021191200
1-3/8"	399021191220
8-Jaw Kit	399031190801



Accessory Kit:

- Tubing cutter
- RLS depth gauge
- RLS press gauge
- Permanent marker
- Wire Brush (for jaw cleaning)
- Abrasive pad
- Deburring tool

Accessory kit is included in both 19 kN tool kits. 32 kN 8-jaw kit includes the depth gauge, press gauge, marker, brush and abrasive pad (no cutter or deburring tool).

TOOLS, JAWS AND ACCESSORIES

Klauke® Tool and Jaw Kits



Each tool and jaw set comes in a hard plastic carrying case. Batteries and battery chargers may be locally supplied by RLS stockist. Please check when purchasing. If not supplied by RLS stockist, please contact your nearest Makita stockist.

32 kN Tool (no jaws)
Part Number: 399011320002

19 kN Tool (no jaws)
Part Number: 399011190002

19 kN Tool and 5 Jaws
(3/8", 1/2", 5/8", 7/8", 1-1/8")
Part Number: 399011190502

Jaw Kits

32 kN 8-Jaw Kit
(1/4", 3/8", 1/2", 5/8", 3/4", 7/8", 1-1/8", 1-3/8")
Part Number: 399031320801

19 kN 8-Jaw Kit
(1/4", 3/8", 1/2", 5/8", 3/4", 7/8", 1-1/8", 1-3/8")
Part Number: 399031190801

RIDGID® Jaws



Size	Part Number
1/4"	399022001040
5/16"	399022001050
3/8"	399022001060
1/2"	399022001080
5/8"	399022001100
3/4"	399022001120
7/8"	399022001140
1-1/8"	399022001180
1-3/8"	399022001220

RIDGID 8-Jaw Set

The RIDGID 8-Jaw Set comes in a hard plastic carrying case and includes a tube cutter, deburring tools, press gauge, depth gauge, stainless steel brush, abrasive pad and permanent marker. Jaw sizes include 1/4", 3/8", 1/2", 5/8", 3/4", 7/8", 1-1/8" and 1-3/8". The 5/16" jaw is sold separately.

Part Number: 399032000801

NOTE: RIDGID press tools are sold through RIDGID distributors, available in lightweight pistol-grip and inline models.

Accessories

Part Number	Description
399011000100	Klauke Replacement Tool Case
399031000100	Klauke Jaw Case
399032000100	RIDGID Jaw Case
399040307	1-1/4" Press Gauge
399040306	Press Gauge
399040308	Depth Gauge
399040301	Tube Cutter
399040302	Small Tube Deburring Tool (1/4" - 1-1/4")

Part Number	Description
399040309	Large Tube Deburring Tool (1/2" - 2")
399040303	Stainless Steel Brush
399040304	Abrasive Pad
399040305	Permanent Marker
399040101	Safety Kit (plastic bag, pen, instructions, crimp/depth gauges)
399040201	Diagnostic tool - PGA1



Tool and Jaw Compatibility Matrix

			JAW MANUFACTURER				
			Klauke®			RIDGID®	Milwaukee®
TOOL MANUFACTURER	Model(s)	Size Range	15 kN	19 kN	32 kN	24 kN	32 kN
	MAP2L	1/4" – 1-1/8"	✓				
	MAP2L19	1/4" – 1-3/8"		✓			
	UAP 332	1/4" – 1-3/8"			✓		✓
	UAP 432	1/4" – 1-3/8"			✓		✓
	Romax Compact	1/4" – 1-3/8"		✓			
	Romax 3000	1/4" – 1-3/8"			✓		✓
	Romax 4000	1/4" – 1-3/8"			✓		✓
	PC-20 M	1/4" – 1-1/8"	✓				
	RP 200 RP 210 RP 240 RP 241	1/4" – 1-3/8"				✓	
	RP 330 RP 340 RP 350 RP 351	1/4" – 1-3/8"			✓		✓
	M12	1/4" – 1-3/8"				✓	
	M18	1/4" – 1-3/8"			✓		✓
	Pressgun Picco 6	1/4" – 1-3/8"				✓	
	Pressgun 6	1/4" – 1-3/8"			✓		✓
	ACO103	1/4" – 1-3/8"		✓			
	ACO203	1/4" – 1-3/8"			✓		✓
	ECO203	1/4" – 1-3/8"			✓		✓
	EFP203	1/4" – 1-3/8"			✓		✓
	DCE200	1/4" – 1-3/8"			✓		✓

Only RLS-approved tools and jaws can be used to install RLS fittings.

TECHNICAL DATA

Applications

- High Pressure HVAC/R
- Ethylene Glycol
- Non-Potable Water

Product Parameters

- Continuous Operating Temperature: 121°C
- O-Ring Temperature Rating: -40°C to +149°C
- Maximum Rated Pressure (MRP): 700 psi / 4,800 kPa
- Minimum Burst Pressure (UL 207): 2,100 psi / 14,500 kPa
- Vacuum Pressure Capability: <200 Microns
- External Helium Leak Rate: <7.5 x 10⁻⁷ Pa•m³/s at 20°C & 1,000 kPa
- Vibration Resistance: Conforms to UL109
- Size Availability (Inches): 1/4, 5/16, 3/8, 1/2, 5/8, 3/4, 7/8, 1, 1-1/8, 1-1/4, 1-3/8, 1-5/8, 2-1/8

Fitting Materials

- Fitting Body: Refrigerant Grade Copper, per ASTM-B75 or ASTM-B743
- O-Ring: HNBR

Compatibility

- Approved Oils: Mineral Oil, POE, PVE, PAG
- Approved Tubing Materials: Copper-to-Copper Connections
- Approved Tubing Tolerance: ASTM B88/B280, EN 12735 & AS/NZS 1571
- Approved Copper Tubing Types for 32 kN Tool/Jaws
 - Hard/Drawn: 1/4" to 2-1/8" Type ACR, L, K
 - Soft/Annealed: 1/4" to 1-3/8" Type ACR, L, K
- Approved Copper Tubing Types for 19 kN and 24 kN Tool/Jaws
 - Hard/Drawn: 1/4" to 1-3/8" Type ACR, L, K
 - Soft/Annealed: 1/4" to 1-3/8" Type ACR, L, K
- Approved Copper Tubing Types for 15 kN Tool/Jaws
 - Hard/Drawn: 1/4" to 1-1/8" Type ACR, L; 1/4" - 7/8" Type K
 - Soft/Annealed: 1/4" to 1-1/8" Type ACR, L; 1/4" - 7/8" Type K

Agency Approvals and Certifications

- UL Listed: 207, SA#33958, SDTW (7) (Except where noted)
- UL Listed: Approved Use For Field & Factory Installations
- ISO 5149-2: Part 2 Compliant
- ASHRAE-15, ANSI 15, ASME B31.5 (504.7)
- ICC-ES, PMG-1296
- International Mechanical Code (IMC) 2021, 2018, 2015, 2012, 2009, 2006
- International Residential Code (IRC) 2021, 2018, 2015, 2012, 2009, 2006
- Uniform Mechanical Code (UMC) 2021, 2018, 2015, 2012, 2009, 2006
- CRN 0A22551 and 0A18303
- JCDA Certified

RLS Press Fitting Patents

- U.S. Patent No. 9,145,992
- U.S. Patent No. 9,638,361
- U.S. Patent No. D730,494
- Australian Patent No. 2012362443
- Brazilian Patent No. BR112014016012-0
- Canadian Patent No. 2,800,360
- Canadian Design Registration No. 149228
- EUIPO Registered Community Design No. 002218636-0001
- Japanese Patent No. 6051468
- Other Pending Patent Applications

RLS Press Tools and Jaws Patents

- Australian Design Registration No. 361533
- Canadian Design Registration No. 161804
- EUIPO Registered Community Design No. 002672667-0001
- Japanese Design Registration No. 1537545
- Other Pending Patent Applications

**MADE
IN USA** 



rapidlockingsystem.com.au

Contact Ian Robertson, Director of Sales, Australia and New Zealand,
at irobertson@rapidlockingsystem.com or +61 419 460 785.

CAT03-23-AUS