

SEZ Series

CEILING CONCEALED SYSTEM



The SEZ Series is conveniently hidden in the ceiling cavity with only the grilles visible. Compact, whisper quiet and highly efficient, these concealed units fit easily and discreetly into rooms with lowered or bulkhead ceilings.

Key Features

R32

Next-Generation R32 Technology

SEZ Ceiling Concealed Systems feature the latest in super-efficient and more environmentally friendly R32 refrigerant. With a global warming potential that is 30% lower compared to older refrigerants such as R410A, next generation R32 refrigerant has a much lower environmental impact. Furthermore, zero ozone depleting R32 is easier to reuse and recycle.



Compact Design

Ceiling concealed and a slim 200mm in height, the SEZ Series is ideal for tight installation spaces.



Quiet Comfort

The SEZ Series offers whisper quiet operation, starting at a hushed 23dBA*.



Air Cleaning Filter

This built-in filter removes dust and other irritating particles, keeping the air clean at all times. Maintenance is as simple as vacuuming. The long-life filter in the SEZ Series indoor units can be used for approximately 2,500 hours before requiring replacement.



Easy Installation

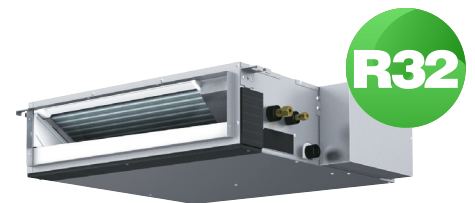
The SEZ Series' lightweight design and low unit height makes for an easier and more convenient installation.



Optional Wi-Fi Control: Elevate Comfort, Maximise Efficiency

Upgrade your system with optional Wi-Fi Control. Make real-time adjustments on-the-go, no matter where you are via remote access. Optimise energy efficiency with smart scheduling and customisable zone/room control.

Mr. SLIM

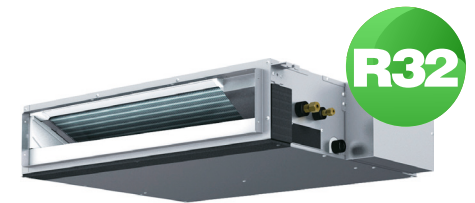


SEZ-M35DA

Heating Capacity: 4.0 kW | Cooling Capacity: 3.5 kW

SEZ-M50DA

Heating Capacity: 6.0 kW | Cooling Capacity: 5.0 kW

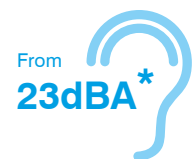


SEZ-M60DA

Heating Capacity: 7.0 kW | Cooling Capacity: 6.0 kW

SEZ-M71DA

Heating Capacity: 8.0 kW | Cooling Capacity: 7.1 kW



*SEZ-M35 indoor sound level on lowest fan speed.

OPTIONAL
Wi-Fi
CONTROL

Specifications: SEZ Ceiling Concealed Series

| REFRIGERANT | | R32 | | | | | | | |
|--------------------------|-------------|-----------------------------|------------------|------------------|------------------|------------------|------------------|------------------|-------------------|
| INDOOR UNIT | | SEZ-M35DA | | SEZ-M50DA | | SEZ-M60DA | | SEZ-M71DA | |
| OUTDOOR UNIT | | SUZ-M35VAD | | SUZ-M50VAD | | SUZ-M60VAD | | SUZ-M71VAD | |
| Function | | Cooling | Heating | Cooling | Heating | Cooling | Heating | Cooling | Heating |
| Capacity (min.–max.) | (kW) | 3.5 (1.5-4.0) | 4.0 (1.3-5.0) | 5.0 (2.3-6.3) | 6.0 (1.7-7.2) | 6.0 (2.3-6.5) | 7.0 (2.5-8.0) | 7.1 (2.8-8.3) | 8.0 (2.6-10.4) |
| Power Input | (kW) | 1.01 | 1.11 | 1.40 | 1.66 | 1.73 | 2.00 | 2.14 | 2.22 |
| Rated EER/COP | | 3.46 | 3.60 | 3.57 | 3.61 | 3.46 | 3.50 | 3.31 | 3.60 |
| Rated AEER/ACOP | | 3.39 | 3.53 | 3.51 | 3.57 | 3.41 | 3.45 | 3.27 | 3.55 |
| Power Supply | | V: Single-phase, 50Hz, 230V | | | | | | | |
| Airflow (Lo–Mid–Hi) | m³/min | 7-9-11 | | 10-12.5-15 | | 12-15-18 | | 12-16-20 | |
| | L/S | 117-150-183 | | 167-208-250 | | 200-250-300 | | 200-267-333 | |
| External Static Pressure | Pa | 5 / 15 / 35 / 50 | | | | | | | |
| Sound Pressure Level | (dB) | 23-28-33 | | 30-34-37 | | 30-34-38 | | 30-35-40 | |
| Dimensions (indoor) | Height (mm) | 200 | | 200 | | 200 | | 200 | |
| | Width (mm) | 990 | | 990 | | 1190 | | 1190 | |
| | Depth (mm) | 700 | | 700 | | 700 | | 700 | |
| Weight (indoor) | (kg) | 21 | | 22 | | 25.5 | | 25.5 | |

Outdoor Unit Specifications

| OUTDOOR UNIT | | SUZ-M35VAD | | SUZ-M50VAD | | SUZ-M60VAD | | SUZ-M71VAD | |
|--|-------------|--------------------------|--|------------------------|--|-------------------------|--|-------------------------|--|
| External Finish | | Munsell 3.0Y 7.8 / 1.1 | | | | | | | |
| Power Supply | | Single-phase, 50Hz, 230V | | | | | | | |
| Compressor Output | (kW) | 0.66 | | 0.90 | | 0.90 | | 1.20 | |
| Airflow (Cooling/Heating) | m³/min(L/S) | 34.3 (572) / 32.7 (545) | | 45.8 (763) / 43.7(728) | | 50.1 (835) / 50.1 (835) | | 50.1 (835) / 50.1 (835) | |
| Sound Pressure Level (Cooling/Heating) | (dB)*2 | 48 / 48 | | 48 / 49 | | 49 / 51 | | 49 / 51 | |
| Sound Power Level | (dB) | 63 | | 66 | | 68 | | 68 | |
| Dimensions (H x W x D) | (mm) | 550x800x285 | | 714x800x285 | | 880x840x330 | | 880x840x330 | |
| Weight | (kg) | 35 | | 41 | | 54 | | 55 | |
| Piping Length (Chargeless/ Max.) | (m) | 7 / 20 | | 7 / 30 | | 7 / 30 | | 7 / 30 | |
| Breaker Size | (A) | 10 | | 20 | | 20 | | 20 | |

Amount of Required Refrigerant (R32:kg)

| PIPING LENGTH | FACTORY CHARGED (kg) | ADDITIONAL CHARGE (kg) | | | | |
|---------------|----------------------|------------------------|------|------|------|------|
| | 7m | 10m | 15m | 20m | 25m | 30m |
| SUZ-M35 | 0.9 | 0.06 | 0.16 | 0.26 | - | - |
| SUZ-M50 | 1.2 | 0.06 | 0.16 | 0.26 | 0.36 | 0.46 |
| SUZ-M60 | 1.25 | 0.06 | 0.16 | 0.26 | 0.36 | 0.46 |
| SUZ-M71 | 1.45 | 0.12 | 0.32 | 0.52 | 0.72 | 0.92 |

Refrigerant Piping

| CAPACITY | BETWEEN INDOOR AND OUTDOOR UNITS | | PIPE SIZE OD (mm – in.) | THICKNESS (mm) |
|------------|----------------------------------|------------------------|-------------------------|----------------|
| | MAX. HEIGHT DIFFERENCE (m) | MAX. PIPING LENGTH (m) | | |
| SUZ-M25/35 | 12 | 20 | Liquid: Ø 6.35 – 1/4" | t 0.8 |
| | | | Gas: Ø 9.52 – 3/8" | t 0.8 |
| SUZ-M50 | 30 | 30 | Liquid: Ø 6.35 – 1/4" | t 0.8 |
| | | | Gas: Ø 12.7 – 1/2" | t 0.8 |
| SUZ-M60 | 30 | 30 | Liquid: Ø 6.35 – 1/4" | t 0.8 |
| | | | Gas: Ø 15.88 – 5/8" | t 1.0 |
| SUZ-M71 | 30 | 30 | Liquid: Ø 9.52 – 3/8" | t 0.8 |
| | | | Gas: Ø 15.88 – 5/8" | t 1.0 |

*2 Sound pressure measurements were conducted in an anechoic chamber. The actual noise level depends on the distance from the unit and the acoustic environment.

For more information please visit our website
or call our Customer Service Team.

www.mitsubishi-electric.co.nz | 0800 784 382

PUBLISHED NOV 2023

 PLEASE LOOK AFTER THE ENVIRONMENT AND RECYCLE



Black Diamond
Technologies Limited



Exclusive New Zealand
Partner Since 1981

