

PLA Series

CEILING CASSETTE SYSTEM



Mr. SLIM



The PLA Large Capacity Cassette Series with advanced 4-way airflow features and independent vane control, provides indoor comfort in a sleek unobtrusive design. Perfect for larger residential rooms or office spaces.

Key Features

R32 Next-Generation R32 Technology
 PLA Ceiling Cassette Systems feature the latest in super-efficient and more environmentally friendly R32 refrigerant. With a global warming potential that is 30% lower compared to older refrigerants such as R410A, next generation R32 refrigerant has a much lower environmental impact. Furthermore, zero ozone depleting R32 is easier to reuse and recycle.

3D i-See Sensor
 The PLA Series comes standard with 3D i-See Sensor Technology. The 3D i-See Sensor works to detect the floor temperature and how many people are present in the room, automatically switching to the optimal operating mode. With a total of eight sensors which rotate a full 360° in three minute intervals, it is able to detect people's position in the room to provide direct or indirect airflow as preferred.

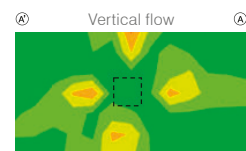
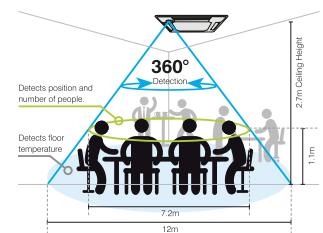
Wide Airflow
 PLA Series Cassettes utilise wide-angle outlets to distribute airflow to all corners of the room, ensuring the room is cooled/heated in an even manner. Both horizontal airflow and fan speed have been reduced by 20% compared to conventional models, contributing to increased comfort for occupants.

Fresh Air Intake
 A duct opening is provided in the main body making it possible to bring fresh air in directly, where it can then be heated to provide clean, refreshing comfort.

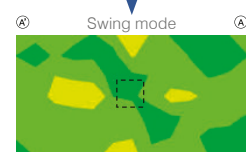
Independent Vane Direction Setting (P Series Outdoor Only)
 With the ability to independently control each vane's airflow pattern, PLA Series Cassettes are perfect for both residential and office/commercial environments.

- PLA-M71EA
 Heating Capacity: 8.0 kW | Cooling Capacity: 7.1 kW
- PLA-M100EA
 Heating Capacity: 11.2 kW | Cooling Capacity: 10.0 kW
- PLA-M125EA
 Heating Capacity: 14.0 kW | Cooling Capacity: 12.5 kW*
- PLA-M140EA
 Heating Capacity: 16.0 kW | Cooling Capacity: 13.5 kW

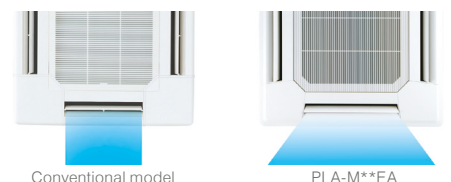
*Deluxe Outdoor Unit Values



Temperature gap with uneven temperature distribution



Temperature gap is decreased, and room is warmed uniformly





Standard or Deluxe Outdoor Units

The Standard Range of outdoor units, available in 10.0kW and 12.5kW, are the ideal economical solution for buildings or homes where extended pipe runs are not necessary. The Deluxe Outdoor Unit offers longer pipe runs, slightly lower Sound Pressure Levels and extended guaranteed heating down to -20°C.



Auto Fan Speed Mode

The fan speed on PLA Series Cassettes is adjusted automatically, maintaining a comfortable environment at all times. At the start of operation, a high fan speed achieves quick heating/cooling of the room. Once the desired temperature is reached, the fan speed is reduced for stable, more efficient heating/cooling and greater comfort.



Wired or Wireless Control Options

Deluxe PAR Weekly Controller

- This attractive full dot liquid crystal display incorporates a large backlit screen and simple menus for easy operation. Set up to 8 temperature and airflow patterns per day for seven days, allowing you to reduce your energy consumption when needed, saving you both time and money.

Deluxe Wireless Weekly Controller

- With a backlit screen for easy viewing, and advanced feature controls exclusive to the PLA Series, including 3D i-See Sensor and individual vane settings, the Deluxe Wireless Controller offers the ultimate in customised comfort.



Optional Automatic Elevating Grille

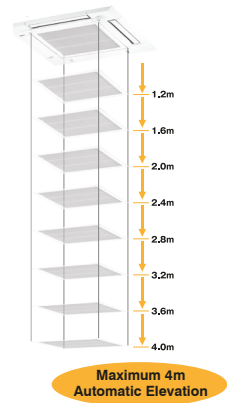
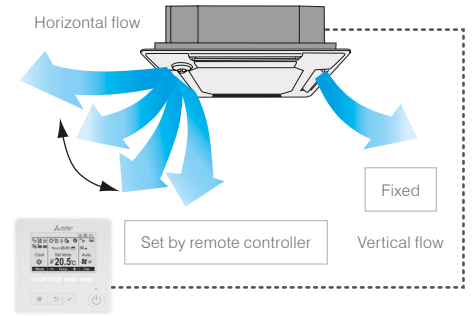
An Automatic Grille Lowering Function capable of stopping at eight different heights is available to simplify filter maintenance.

- The packaged elevating (up/down) controller in the grille (PLP-6EAJE) is compatible with both PUZ Series or SUZ Series Systems.
- The Wired PAR Remote Controller includes the Automatic Grille Lowering Function. This function is only available when the indoor unit is connected to the PUZ Series outdoor unit.
- PLA equipped with the Automatic Elevating Grille (PLP-6EAJE) are compatible with wired and wireless controllers. Controllers ordered separately.



Optional Wi-Fi Control: Elevate Comfort, Maximise Efficiency

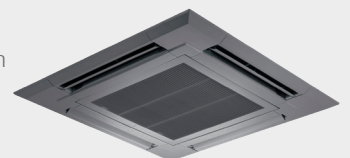
Upgrade your system with optional Wi-Fi Control. Make real-time adjustments on-the-go, no matter where you are via remote access. Optimise energy efficiency with smart scheduling and customisable zone/room control.



New Wired Black Grille Option*

In addition to the Wired and Wireless grille options in Pure White, a Wired option in Black will be available from late 2023. The Wired grille in Black will have the same sleek bevelled design as the Wired and Wireless White colour options.

*Black Wired Grille does not include 3D i-Sensor functionality.



Specifications: PLA Ceiling Cassette Series

REFRIGERANT		R32													
INDOOR UNIT		PLA-M71EA				PLA-M100EA				PLA-M125EA				PLA-M140EA	
OUTDOOR UNIT		SUZ-M71VAD		PUZ-ZM71VHA		PUZ-M100VKA		PUZ-ZM100VKA		PUZ-M125VKA		PUZ-ZM125VKA		PUZ-ZM140VKA	
Function		Cooling	Heating	Cooling	Heating	Cooling	Heating	Cooling	Heating	Cooling	Heating	Cooling	Heating	Cooling	Heating
Capacity (min.-max.)	(kW)	7.1 (2.8-8.1)	8.0 (2.6-10.2)	7.1 (3.3-8.1)	8.0 (3.5-10.2)	10.0 (4.0-10.6)	11.2 (2.8-12.5)	10.0 (4.9-11.4)	11.2 (4.5-14.0)	12.0 (5.8-13.0)	14.0 (4.1-15.0)	12.5 (5.5-14.0)	14.0 (5.0-16.0)	13.5 (6.2-15.3)	16.0 (5.7-18.0)
Power Input	(kW)	1.87	2.17	1.78	2.03	2.88	2.98	2.43	2.94	3.46	3.85	3.55	3.58	3.93	4.48
Rated EER/COP		3.79	3.68	3.98	3.94	3.47	3.75	4.11	3.80	3.46	3.63	3.52	3.91	3.43	3.57
Rated AEEER/ACOP		3.73	3.63	3.77	3.75	3.36	3.64	3.95	3.68	3.38	3.55	3.42	3.80	3.34	3.49
Power Supply		230V, Single-phase, 50Hz													
Airflow	m³/min	16-17-19-21				19-23-26-29				21-25-28-31				24-26-29-32	
	L/S	267-283-317-350				317-383-433-483				350-417-467-517				400-433-483-533	
Indoor Sound Pressure Level	(dB)	28-30-32-34				31 - 34 - 37 - 40				33 - 37 - 41 - 44				36-39-42-44	
Dimensions (indoor)	Height (mm)	Unit: 258, Panel: 40								Unit: 298, Panel: 40					
	Width (mm)	Unit: 840, Panel: 950								Unit: 840, Panel: 950					
	Depth (mm)	Unit: 840, Panel: 950								Unit: 840, Panel: 950					
Weight (indoor)	(kg)	Unit: 21, Panel: 5				Unit: 24, Panel: 5				Unit: 27, Panel: 5					
Refrigerant Piping	Max. Length/Height	30/30		50/30		55 / 30		75 / 30		55 / 30		75 / 30			
Operation Range Outdoor	Cooling (°C)	-5(-15*) ~ 52				-15 ~ 46		-5(-15*) ~ 52		-15 ~ 46		-5(-15*) ~ 52			
	Heating (°C)	-15 ~ 24		-20 ~ 21		-15 ~ 21		-20 ~ 21		-15 ~ 21		-20 ~ 21			

Outdoor Unit Specifications

OUTDOOR UNIT		SUZ-M71VAD	PUZ-ZM71VHA	PUZ-M100VKA	PUZ-M125VKA	PUZ-M140VKA	PUZ-ZM100VKA	PUZ-ZM125VKA	PUZ-ZM140VKA
External Finish		Munsell 3.0Y 7.8 / 1.1							
Power Supply		Single-phase, 50Hz, 230V							
Compressor Output	(kW)	1.20	1.30	1.5	2.5				
Airflow (Cooling/Heating)	m³/min(L/S)	50.1 (835)	55 (915)	79 (1317)	86 (1433)	120 (1996)	110 (1831)	120 (1996)	
Sound Pressure Level (Cooling/Heating)	(dB)*2	49 / 51	47 / 51	52 / 54	54 / 56	53 / 54	49 / 51	50 / 52	
Sound Power Level	(dB)	68	67	71 / 72	72 / 74	71 / 72	69 / 69	70 / 70	70 / 71
Dimensions (H x W x D)	(mm)	880x840x330	943x950x330	981x1050x330+40		1338x1050x330+40	1338x1050x330		
Weight	(kg)	55	70	76	84	99	111		
Piping Length (Chargeless/ Max.)	(m)	7 / 30	30 / 50	30 / 55			30 / 75		
Protection Device		-	-	Comp. surface thermo, HP Switch			Discharge thermo, HP switch		
Breaker Size	(A)	20	25	32		40	32		40

Amount of Required Refrigerant (R32:kg)

PIPING LENGTH	FACTORY CHARGED (kg)	ADDITIONAL CHARGE (kg)				
	7m	10m	15m	20m	25m	30m
SUZ-M71	1.45	0.12	0.32	0.52	0.72	0.92
PIPING LENGTH	30m	40m	50m	60m	75m	
PUZ-ZM71	2.80	0.40	0.80	-	-	
PUZ-ZM100/125/140	4.00	0.40	0.80	1.20	1.80	
PUZ-M100	3.10	0.40	0.80	-	-	
PUZ-M125	3.60	0.40	0.80	-	-	
PUZ-M140	3.90	0.00	0.00	-	-	

Refrigerant Piping

CAPACITY	BETWEEN INDOOR AND OUTDOOR UNITS		PIPE SIZE OD (mm - in.)	THICKNESS (mm)
	MAX. HEIGHT DIFFERENCE (m)	MAX. PIPING LENGTH (m)		
SUZ-M71	30	30	Liquid: Ø 9.52 - 3/8"	t 0.8
			Gas: Ø 15.88 - 5/8"	t 1.0
PUZ-ZM71	30	50	Liquid: Ø 9.52 - 3/8"	t 0.8
			Gas: Ø 15.88 - 5/8"	t 1.0
PUZ-M100/125/140	30	55	Liquid: Ø 9.52 - 3/8"	t 0.8
			Gas: Ø 15.88 - 5/8"	t 1.0
PUZ-ZM100/125/140	30	75	Liquid: Ø 9.52 - 3/8"	t 0.8
			Gas: Ø 15.88 - 5/8"	t 1.0

* With optional air protection guide.

*2 Sound pressure measurements were conducted in an anechoic chamber. The actual noise level depends on the distance from the unit and the acoustic environment.

For more information please visit our website
or call our Customer Service Team.
www.mitsubishi-electric.co.nz | 0800 784 382

PUBLISHED NOV 2023

 PLEASE LOOK AFTER THE ENVIRONMENT AND RECYCLE



Black Diamond
Technologies Limited



Exclusive New Zealand
Partner Since 1981

